

Subiaco Nuclear Medicine Service

Guidelines for SPECT/CT

The PRC Subiaco Hybrid SPECT/CT machine comprises a state of the art dual headed gamma camera and built in low dose CT scanner.

This camera performs the full gamut of Nuclear Medicine studies.

SPECT/CT has many clinical uses, offering significant incremental value over routine planar and SPECT scintigraphy.

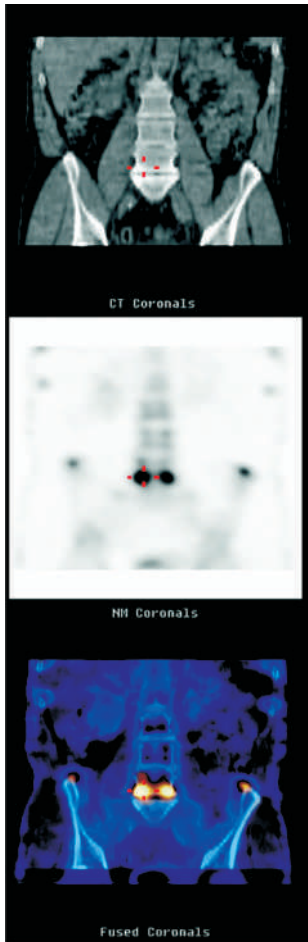
Specific Indications and Uses of SPECT/CT

1. **Bone Scans**
 - a) **Degenerative disease of the spine.** Accurate assessment of the site of disc degeneration and facet joint arthropathy using the co-registered CT.
 - b) **Spinal trauma** and complications associated with pars defects and other developmental variants.
 - c) **Assessment of sclerotic foci** demonstrated on x-ray or CT. Differentiation between benign and malignant disease.
 - d) **Ankle, hindfoot and midfoot pain.**
 - e) Accurate assessment of **sacroiliac joint pathology.**
2. **Cardiac – Myocardial Perfusion Studies.**
 - a) CT attenuation correction.
 - b) Co-registration with Coronary CT angiography*
3. **Other**
 - a. **Infection Imaging - Gallium**
 - b. **Parathyroid Scan**
 - c. **Labeled Red cell Scan** – Haemangioma Liver
 - d. **Labeled White cell Scan** – Inflammatory Bowel disease

The PRC Subiaco Nuclear Medicine Service:

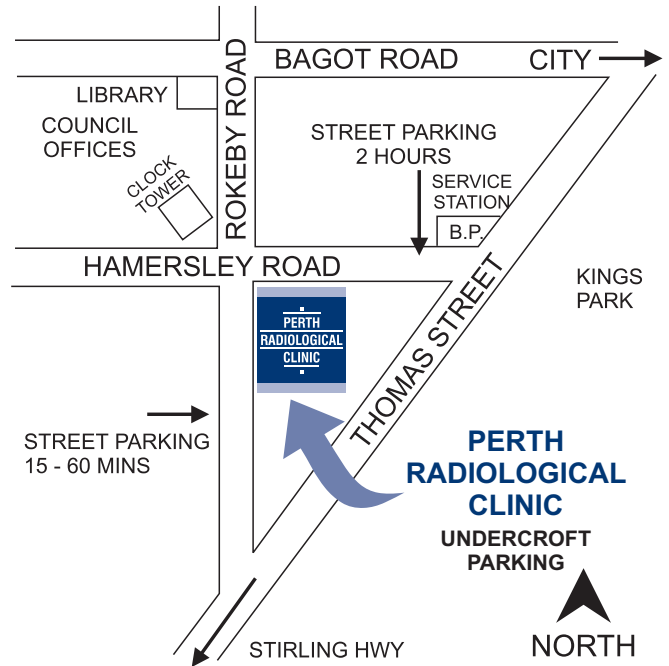
1. Personalised service for you and your patients.
2. Correlation with previous studies. This is made easy with the industry leading PRC Radiology Information and Image transfer system.
3. Correlation with MRI/CT/US with the leading Subspecialist Radiologists in Western Australia.
4. Rapid report turn around. Results of clinical significance will be phoned in a timely fashion.
5. Images and reports can be delivered straight to your desktop computer with PRC Direct.

*selected cases only.



SUBIACO

9380 4888



Magnetic Resonance Centre

127 Hamersley Rd

Fx: 9380 4188

Mon - Fri 8:30 - 5:00

- Digital X-Ray
- Ultrasound
- Multislice CT
- Doppler
- FNA
- Nuclear Medicine
- MRI
- Shock Wave Therapy
- OPG
- Dentascan
- Lat Ceph
- Cone Beam Imaging

ARE YOU CONNECTED TO PRC DIRECT?



Perth Radiological Clinic offers secure, digital access to your patients' imaging directly to your personal computer.

That means:

- You have access to the images as soon as your patient's examination has been completed.
- The report is available to you as soon as it has been verified by the radiologist.
- No more lost film.
- No need to wait for delivery of films.



DIRECT
digital delivery



For more information, please email
mreid@perthradclinic.com.au or contact your local clinic.